

# Facts, Data, Figures

## Technical Data

## UNIVERSA 400

Length of cross seal bar	450 mm
Maximum production speed (depends on product and film used)	up to 85 packs / min
Minimum product length / minimum product width	80 mm / 20 mm
Working height, adjustable	780 mm – 930 mm
Conveyor speed approx.	20 m/min
Infeed conveyor can be pulled out for quick and easy threading of film	standard
Film – centre fold or single wound	approx. 12 µm – 80 µm
Film roll, core diameter / outer diameter	approx. 76 mm / max. 400 mm
Film width	max. 600 mm
Film cradle close to floor for easy loading	standard
Industrial programmable controller (PLC)	SIEMENS S7
Operator guidance and error diagnostic by colour Touchpanel SIEMENS TP 270	standard
Sealing system – continuously heated cross seal bar with exchangeable sealing ledge, maintenance free, operates odour free, temperature monitoring and control by PLC	standard
Cross seal bar clearance (higher clearance available on request)	200 mm
Power requirements 400 volts, 3-phase, 50 Hz, with protective earth	standard
Rated power / rated current at 400 V	3.5 kVA / 5.1 amps
Colour	Kalfass Anthracite
The machines conform to EU Machinery Directive 98/37/EC (CE-Certificate), EN/VDI-Guidelines and applicable Health and Safety Regulations of the Berufsgenossenschaft Nahrung und Genussmittel (Employers' Insurance – GS-Certificate).	

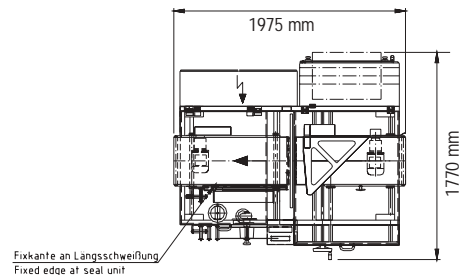
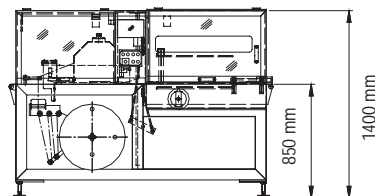
## Options at extra cost

- Infinitely variable speed for both conveyors, approx. speed range 10 – 35 m/min, inclusive soft starter
- Motorised pre-setting, width and height, settings are recalled from Product Data Memory
- Outfeed conveyor as "kissing conveyor" for small products
- Film folding, film trimming, film perforating device with precision needle roller that has 3 rows of needles, film low control
- wheel/knife-combination (patent pending – 10224360.3) for fully closed sealing seams when processing multilayer, irradiated film
- Tear Strip – for ease of opening of the packages by customers
- Print registration for printed films (printed mark solid black)
- Extra long packages: conveyor speed is adjustable in the range 10 – 35 m/min, speed of side sealing is synchronised to ensure hermetically sealed seam
- Modem for remote diagnostics; Ethernet interface (hardware) for connection to production control computer
- Machine on castors for easy portability (different working height)
- Electro-mechanical hole punch system for controlled venting of air when using Polyolefin films
- Left hand version (Note operator side of shrink tunnel)
- Stainless steel version for hygienic packaging in food processing plants
- Integration of control of infeed systems (e.g. MGZ 400 IL or transport conveyor) into PLC and job storage
- Custom colour (single colour, structure lacquer)
- Non-standard supply voltage (see technical data for standard voltage)

Note: Kalfass' product range includes the UNIVERSA 700 for large products and the UNIVERSA 1000 for very large products.

## Dimensions

Approximate dimensions, the drawing may show options that are chargeable extras and not included in the standard machine.



UN400-04.04\_GB - Technical alterations reserved

# Kalfass

## Verpackungsmaschinen



Kalfass Verpackungsmaschinen GmbH  
Germany

Siemensstraße 8 Postfach 15 29  
D-72622 Nürtingen D-72605 Nürtingen

Telefon +49 (0) 70 22/6 07-0  
Telefax +49 (0) 70 22/6 07-200

Internet [www.kalfass.com](http://www.kalfass.com)  
E-Mail [info@kalfass.com](mailto:info@kalfass.com)



*Fully-automatic side sealer*

**UNIVERSA 400**

**Kallfass**  
Verpackungsmaschinen

*A class of its own!*



1 Different products can be packed, here a very high product.  
(additional guidings optional)

2 Very tight packaging of magazines, brochures and similar products.

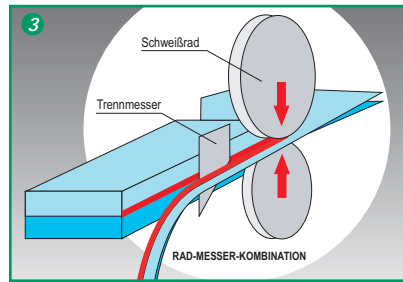
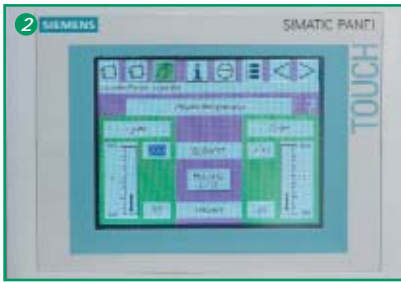
## *One for all occasions*

*The fully-automatic side sealer  
Universa 400 is the solution to (most  
of) your packaging problems. The  
name of these universal film pack-  
aging machines stands for conception  
and target.*

Products with widely varying dimensions and shapes are wrapped with ease in film and reliably sealed.

Universa 400 shows its full capacity especially in operation with fast changing product formats. That's why the UNIVER-SA 400 ist a good choice for companies with a wide range of products as well as for contract packing companies.

Our sales team will be happy to advise you and provide you with details.



- 1 The film cradle is mounted low for quick and easy reel change
- 2 Operator guidance and error diagnostic Multilingual, colored Touchpanel SIEMENS TP 270
- 3 Efficient, durable and a clean cut: the new continuous side seal system for highest seal integrity (option)

## Fast, Versatile, Intelligent

*Innovative technology makes the UNIVERSA 400 fast and versatile to meet the demands of packers and to deliver a smooth and precise packaging process with speeds up to 85 packs per minute.*

A new continuous side seal system is available as an option. This is a wheel/knife combination that enables the UNIVERSA to produce neat and hermetically sealed longitudinal seams. The knife removes excess film by cutting within the sealed strip that has been created by a sealing wheel. The system is particularly

effective when packaging tall products and when sealing multi-layer, cross-linked co-polymer films at high speeds.

The machine is controlled by a SIEMENS S7 industrial programmable controller. The clever part: the transport of each product through the machine is continuously controlled by an electronic supervisor. The supervisor detects the actual position of each pack and optimises the machine cycle for every individual pack. This makes product or speed changes simple, quick, and extremely precise.

Film guides, side seal and cross seal can be adjusted with a single hand wheel. An optional Ethernet interface allows the integration of a UNIVERSA into modern, fully automated production lines and the linking of the machine to a production control computer.

Operation of the Universa 400 by means of multilingual, colored Touchpanel SIEMENS TP 270. The standard integrated Product Data Memory can save approx. 250 different products which can be recalled exactly at any time.



UNIVERSA 400

- 1 Central height adjustment of the sealing unit (motorised adjustment on request)
- 2 Optional: Conveyor belt with frequency controlled, infinitely variable speed
- 3 Exchangeable sealing inserts with different profiles

- 4 Pull-out infeed conveyor for quick film threading
- 5 Solid, welded frame for heavy duty industrial use

Does not require compressed air



You will obtain maximum packaging results with the optional gripper infeed systems. Here with several extension modules and feeders.



T-Gripper enable safe feeding of multipacks e.g. promotion packs (optional).