

MOSCA[®]

STRAPPING SYSTEMS

KPR 131

FULLY AUTOMATIC
PALLET PACKING PRESS



Fully automatic pallet packing press type KPA 131-26 with automatic top edge protection

**MOSCA PALLET PACKING PRESSES
SERIES KPR 131 SECURE PALLET LOADS BY PRESSING
AND VERTICAL STRAPPING WITH PET AND PP STRAPS**

▶ MOSCA – THE WORLD OF STRAPPING

TYPE KPR 131 (BASIC MODEL)

MOSCA's pallet packing presses are manufactured in series based on a unit construction system. Features: robust construction; program-controlled for incorporation in conveying lines; capable of multiple simultaneous strapping; structural steelwork in closed pressed frame, no foundation required for set-up; strap dispenser for plastic straps; weight-neutral strap feed and strap store; especially suitable for cartons stacked on or without pallets.

DIFFERENT MODELS

KPR 131, Basic Model

- 3 strap guidances with 3 strap guiding lances
- 2 sealing heads (1 sealing head laterally movable)
- Driven roller conveyor

KPK 131, Special Version

- Driven roller conveyor with lifting turncross

KPZ 131, Special Version

- Driven roller conveyor with centering device

KPA 131, Special Version

- Driven roller conveyor with lifting turncross and centering device

KPT 131, Special Version

- Turntable with driven roller conveyor

KPK 131 M, Special Version

- Driven roller conveyor with lifting turncross and prepositioned centering device in separate roller conveyor

All models are also available in the following versions:

KPR 121

with 2 fixed sealing heads

as well as KPR 141

with 2 sealing heads, laterally movable

OPTIONS

- Underfeed channels (except KPA and KPZ)
- Automatic top edge protection
- Conveying elements, roller conveyors, chain conveyors, lifting tables
- Special passage widths on request

TECHNICAL DATA

CAPACITY:

120 Pallets / h
with 2 vertical strappings (depend upon product size)

OPERATING VOLTAGE:

400 V, 50 Hz
3 PH/N/PE

CONTROL VOLTAGE:

24 V DC

TOTAL CONNECTION:

6.5 KVA

PASSAGE WIDTHS:

1,800 - 3,200 mm

COMPRESSION FORCE:

50,000 N
infinitely adjustable

STRAP TYPES:

Standard machine grade PP and PET straps

STRAP SIZES:

Width: 9.5 – 16.0 mm
Thickness: 0.4 – 1.0 mm

BREAK STRENGTH:

2,200 – 7,500 N

STRAP TENSION:

250 – 4,000 N
infinitely adjustable

STRAP FEED:

4.2 – 8.3 m/s

SEALING HEAD:

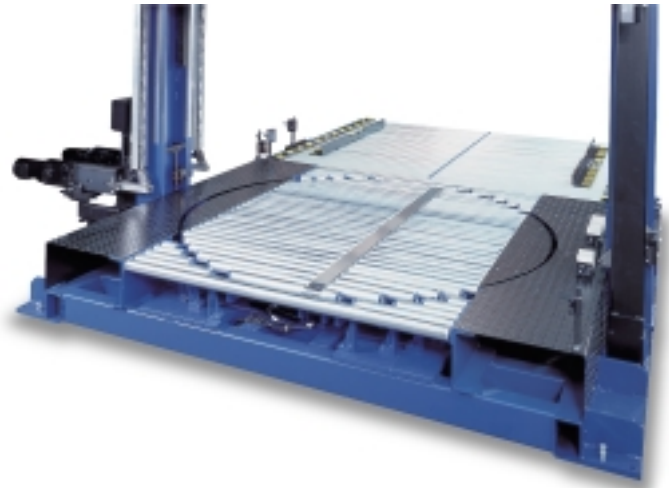
MOSCA friction-weld sealing head

TYPE KPR 131 (SPECIAL VERSIONS)



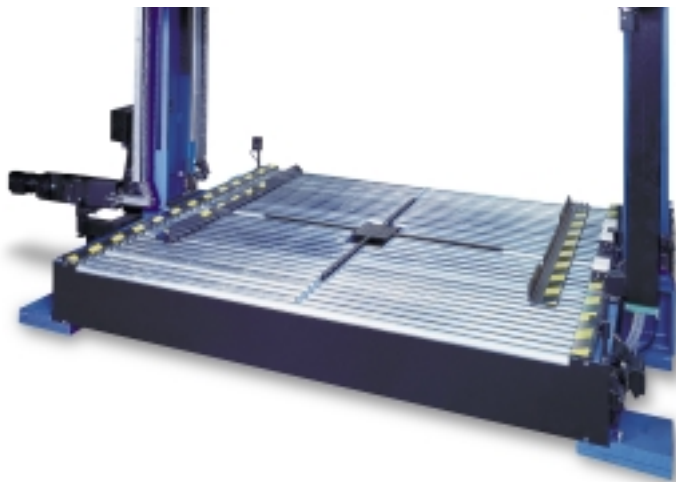
MODEL TYPE - M:

Centering device in separate,
prepositioned roller conveyor section



MODEL TYPE - KPT:

Packing press with integrated turntable



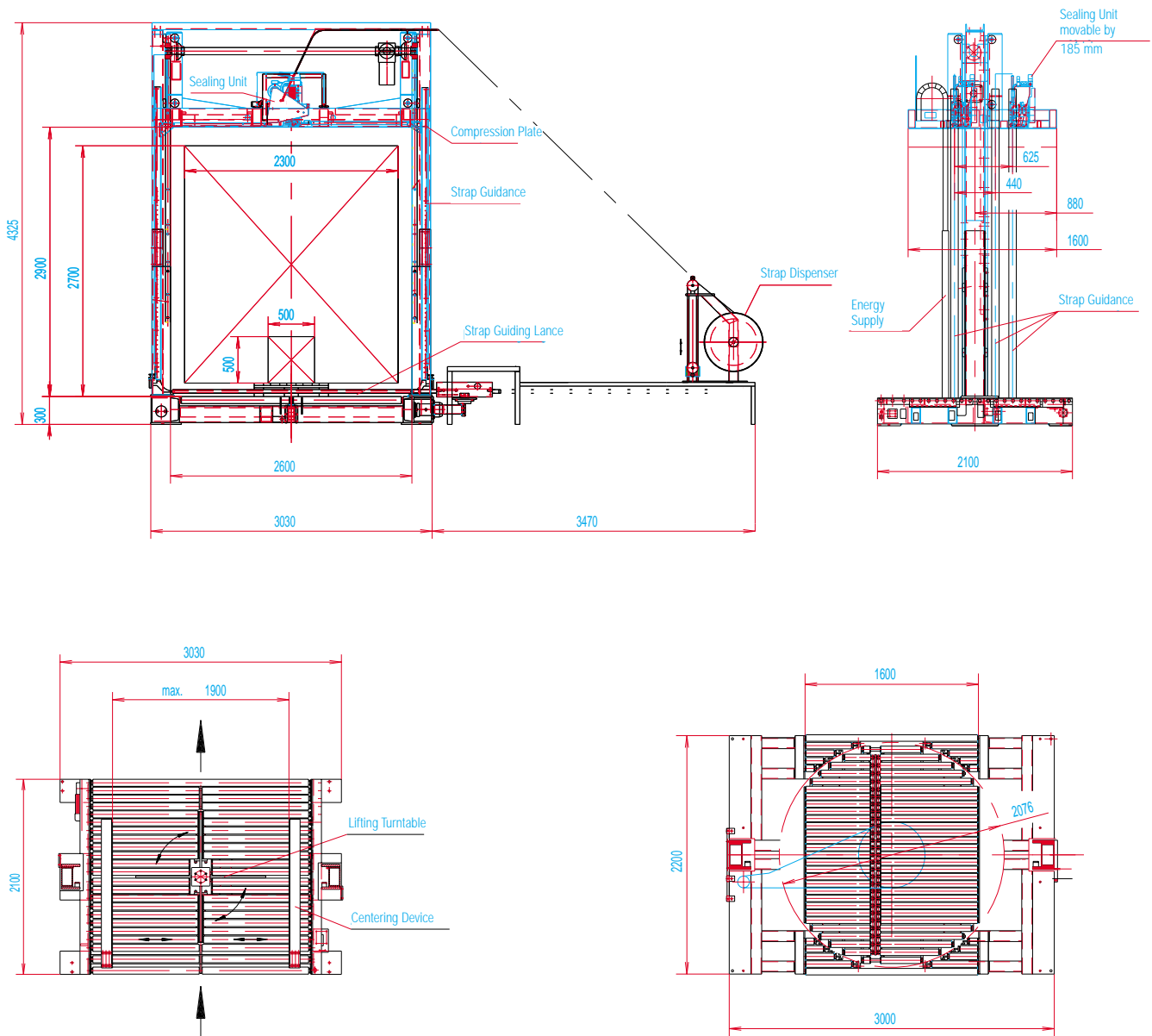
MODEL TYPE - KPA:

Packing press with integrated lifting turncross
and centering device



Automatic top edge protection with
quick change magazine

Dimensions



KPA 131-26, SPECIAL VERSION

Driven roller conveyor
with lifting turntable
and centering device

KPT 131-26, SPECIAL VERSION

Turntable with
driven roller conveyor

11 / 02 Subject to Alterations

**MASCHINENFABRIK
GERD MOSCA AG**

Gartenstraße 1
D-69429 Waldbrunn/Strümpfelbrunn
Tel.: +49 (0) 62 74 / 9 32-0
Fax: +49 (0) 62 74 / 9 32-240
Tel. Service: +49 (0) 62 74 / 9 32-110
Internet: <http://www.mosca-ag.com>
E-Mail: info@mosca-ag.com

